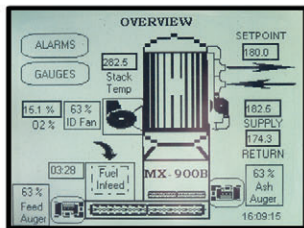
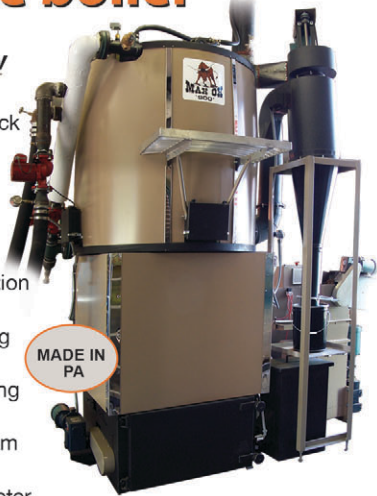


MAX OX™ wood waste boiler

MAX OX™ OVERVIEW

Available now

- 500,000 to 900,000 BTU heat output
- **Modulating circulator** protects boiler from thermal shock
- **Modulating Feed Motor, Induced Draft fan and Ash removal**
- 8" feed auger with sensor triggered automatic clearing cycle minimizes operation-stopping feed jams
- **Automatic ash removal** - standard
- **Oxygen sensor** on exhaust path maximizes combustion
- Unit Dimensions: Length - 14' Height - 11' Width - 5'
- Combustion chamber is poured refractory for handling high temperatures
- Primary, secondary and tertiary combustion air creating gasification effect which minimizes smoke emissions
- **Ash cyclone** filters out particulate from exhaust stream
- Measured combustion efficiency @ 83%
- Rated fuels: wood chips < 1.5", Briquettes < 2" diameter x 1" length, wood shavings, construction/demolition waste (C/D) < 1.5"
- **Programmable Logic Controller with 6" touch screen** automates and monitors all MAX OX™ operations
- Main electrical circuit requirement - 30 amp 240v. single phase - Running current at max output @ 8 amps
- **Very low power consumption**
- Unit control panel includes auxiliary contacts for customer supplied infeed equipment enabling, and alarm signalling.
- Optional remote access feature enabling the unit to be monitored via internet connection



Touch screen Control Display - (Main Menu)



Total Energy Solutions LLC
Elizabethtown, PA • 717-367-3300
www.gototalenergy.com
gototalenergy@gmail.com



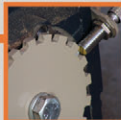
BOILER TUBES

STACK TEMPERATURE PROBE



STOKER BASE

AUGER SENSOR



CONTROL PANEL

SAFETY SWITCHES

